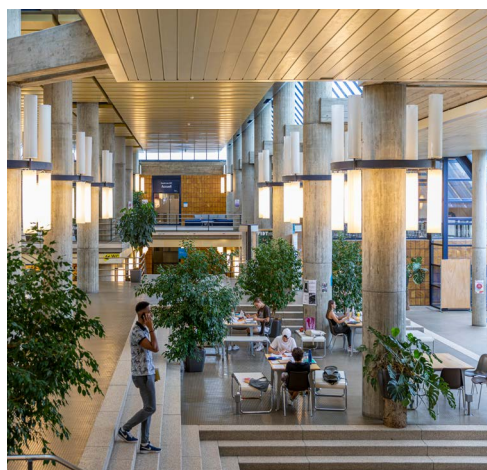


HEC LAUSANNE

Fact sheet 2024-2025

HEC Lausanne, the Faculty of Business and Economics of the University of Lausanne (UNIL) is a high-level research faculty with a strong international influence. Situated only 10 minutes by public transport from the city center of Lausanne, the UNIL campus has exceptional sports, cultural and leisure facilities in a green and spacious environment by Lake Geneva, Lac Léman in French, with the Alps in the background. Lausanne is known as the Olympic Capital as it is the home of the headquarters of the International Olympic Committee and many international sports federations. Located in the French-speaking part of Switzerland, this vibrant and cosmopolitan city is about 60km from Geneva International Airport and easily connected by train.



study programs

New! Two bilingual Bachelor's degrees in French and English

BSc in Economics

BSc in Management

MSc in Accounting, Control and Finance

MSc in Actuarial Science

MSc in Economics

MSc in Finance

MSc in Information Systems and Digital Innovation

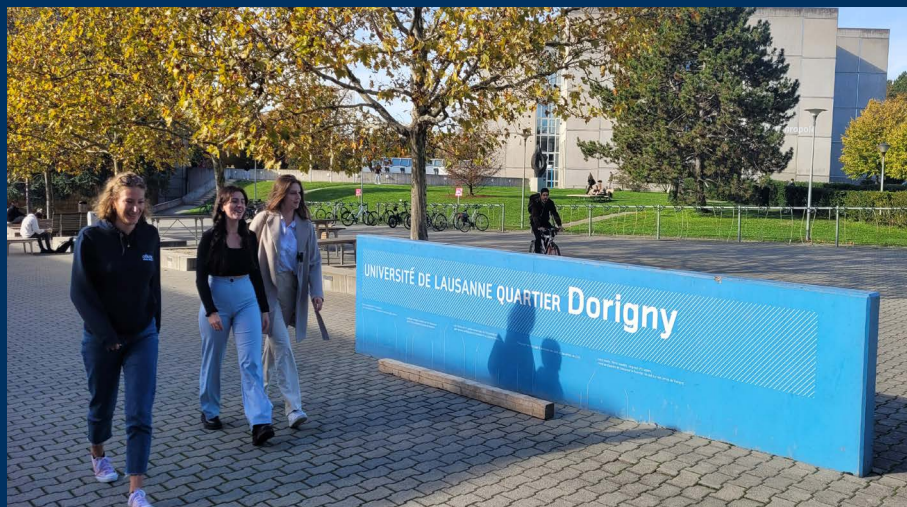
MSc in Management

MLaw in Law and Economics

MLaw in Legal Issues, Crime and Security of Information Technologies

MSc in Sustainable Management & Technology

QTEM Program



academic calendar

	Autumn semester	Spring semester
WELCOME DAY	September 13, 2024	February 14, 2025
FIRST DAY OF CLASSES	September 17, 2024	February 17, 2025
BREAK	-	April 22 to April 25, 2025
LAST DAY OF CLASSES	December 20, 2024	May 30, 2025
EXAMINATION SESSION	January 10 to February 1st, 2025	June 10 to July 5, 2025
RETAKE SESSION		August 18 to September 6, 2025

nomination deadlines

	For coordinators	Online applications & forms for students
Autumn semester		
FACULTY/UNIL AGREEMENTS, QTEM OVERSEAS	March 31, 2024	June 30, 2024
SEMP, QTEM EUROPE	May 31, 2024	June 30, 2024
Spring semester		
ALL AGREEMENTS	October 15, 2024	November 30, 2024

All exchange students must be nominated by the Student Exchange Office of the partner university using the online nomination form sent by hec.incoming@unil.ch. Students will then receive the online application and relevant information for their exchange at HEC Lausanne by e-mail.



academic information and course registration

HEC courses

Bachelor exchange students may choose courses in the 2nd and/or 3rd year of the Bachelor's programs (undergraduate).

To attend Master courses (graduate), exchange students must have completed a Bachelor's degree or a minimum of 180 ECTS in Management and/or Economics.

The courses in the Master in Accounting, Control and Finance and in the Master in Sustainable Management & Technology are not open to exchange students.

Some courses may require prerequisites, the approval of the Professor or may be limited in the number of students.



All HEC students are strongly recommended to have a personal laptop computer.

Courses for exchange students

www.unil.ch/hec/exchange/choice-of-courses

Non HEC courses

Exchange students who are registered at HEC Lausanne are allowed to take courses in another faculty of UNIL, but most courses must be taken at HEC Lausanne, the main faculty where the student is enrolled.

A limited number of courses are also open at the Ecole Polytechnique Fédérale de Lausanne (EPFL), upon request by the student at the beginning of the semester, directly to EPFL.

Course registration

Students must register for courses during the 3rd and 4th weeks of the semester. Registration for courses automatically entails registration for the corresponding assessments.

Exchange students are expected to take their exams during the official exam sessions under the same conditions as regular students.

www.unil.ch/hec/exchange/exams

Workload

The full workload is 30 ECTS per semester. Exchange students are requested to take a minimum of 15 ECTS and a maximum of 36 ECTS per semester. 1 ECTS is equivalent to 25-30 hours of work.

A semester lasts 14 weeks of classes.

Transcripts of records

An official transcript is sent by e-mail to the exchange coordinator of the home university about ten days after the end of the examination session.

languages

Language of instruction

Starting in September 2023, HEC Lausanne introduces French-English bilingualism in its Bachelor's programs. Students will have the choice of taking courses in French, English or a mix of the two languages.

At Master's level, courses are mainly taught in English.

Language requirements

Exchange students are not required to pass any official language test. A minimum level of B2 according to the «Common European Framework of Reference for Languages» is required in French and/or English depending on the language of instruction of the course attended by the student.

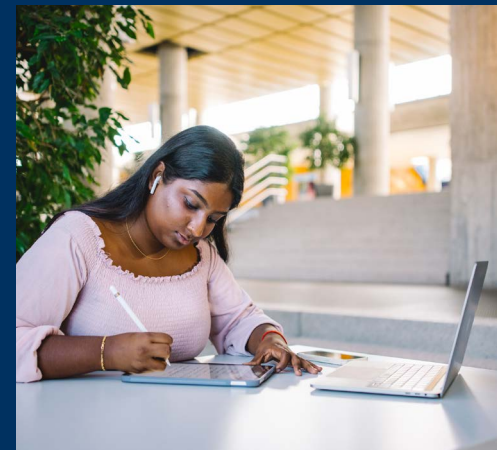
French classes

The School of French as a Foreign Language (EFLE) offers courses for non French-speaking students. They are free and can be taken throughout the semester in parallel with courses at HEC Lausanne.

Intensive French courses (Le FIL de l'EFLE) are also available before the start of the semester(s).

EFLE: www.unil.ch/file

Le FIL de l'EFLE: www.unil.ch/lefil



grading system

UNIL grades (0 - 6 scale)	ECTS grades	Definition
6	A	Excellent
5.5	B	Very good
5	C	Good
4.5	D	Satisfactory
4	E	Pass
3 - 3.5	FX	Fail
1 - 2.5	F	Fail
0		Unjustified absence at the exam or cheating

HEC LAUSANNE

fact sheet 2024-2025



Ms Madeleine LINARD

Executive Director for
International Relations
& Doctoral School
madeleine.linard@unil.ch
+41 21 692 33 07



Ms Isabelle SCHMID

Exchange Program Manager
& QTEM Program
isabelle.schmid@unil.ch
+41 21 692 36 85



Ms Inès ROSATI

Incoming Students Assistant
& Fact Sheet
hec.incoming@unil.ch
+41 21 692 33 08



Ms Jessica FASTRÉ

Outgoing Students Advisor
Europe & Switzerland
hec.outgoing@unil.ch
+41 21 692 33 11



Ms Jessica ULLOA

Outgoing Students Advisor
Overseas
hec.outgoing@unil.ch
+41 21 692 33 39



about UNIL

- 7 faculties
- 190 research units
- 335 partner universities
- 17'000 students
- 125 nationalities
- 40 sheep on campus
- 2 km² campus area
- 133 sports activities
- 1 minute walk to lakeshore



HEC Lausanne

- 2 bachelor programs
- 9 master programs

International Relations Office
Internef 256 and 256.1
UNIL-Chamberonne
1015 Lausanne
Switzerland

Erasmus code:
CHLAUSANN01

www.unil.ch/hec/exchange/in

www.unil.ch/hec



find us on:





health insurance

As health and accident insurance is mandatory in Switzerland, foreign students must have an insurance coverage that complies with Swiss regulations. If a foreign health and accident insurance does not offer the minimum coverage required by Swiss law, exchange students will have to contract a Swiss health and accident insurance for international students. European students can benefit from the minimum coverage required by Swiss law if they have a European Health Insurance Card.

www.unil.ch/international/insurance

living costs

The average budget a student needs to live in Lausanne is around CHF 1'950 per month (incl. CHF 600 to 800 per month for accommodation). This amount includes food, personal effects, housing, health and accident insurance, books and school supplies.

www.unil.ch/international/insurance

accommodation

UNIL works closely with the Fondation Maisons pour Etudiants Lausanne (FMEL), which welcomes over 3'500 students at 14 sites, mainly within the Lausanne urban area.

UNIL tries to secure accommodation for a part of the exchange students in an FMEL hall of residence.

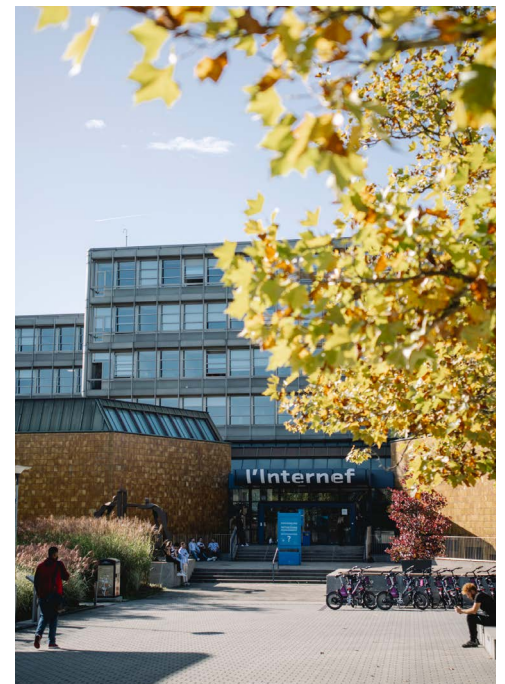
However, since FMEL has a limited number of places available, unfortunately UNIL cannot provide accommodation for all exchange students. Priority is given to students from non-European countries and from universities with which UNIL has signed bilateral student exchange agreements. UNIL cannot guarantee accommodation at FMEL to students coming under the SEMP agreements.

It is therefore recommended that exchange students consider other housing options on the private rental market at the same time. If needed, UNIL and EPFL run a joint accommodation database reserved exclusively for their students.

www.unil.ch/international/comingtolausanne

www.fmel.ch

www.unil-epfl-logement.ch/en



Updated: November 2023



student services

Information for exchange students	www.unil.ch/international/incoming
UNIL Academic Calendar	www.unil.ch
Life on campus	www.unil.ch/etudiants
Sport Santé UNIL-EPFL	https://sport.unil.ch/
University Libraries	www.unil.ch/etudiants/Libraries
IT Services	www.unil.ch/etudiants/IT
Support and Assistance (e.g. disabilities)	www.unil.ch/etudiants/Support-assistance
HEC Career Center	https://heccareer.ch/
Comité HEC Lausanne	https://comite.ch/
ESN-UNIL student association	https://unil.esn.ch/
QTEM Lausanne Club	www.unil.ch/hec/exchange/qtem